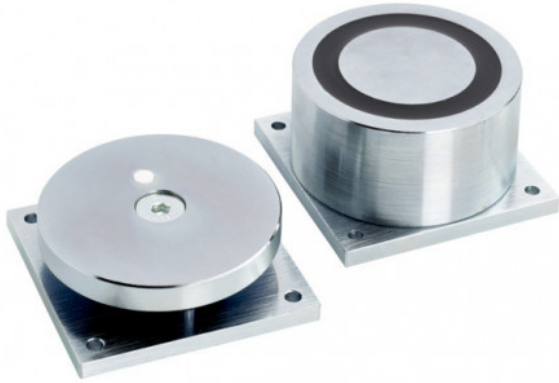


EXT-R12/24



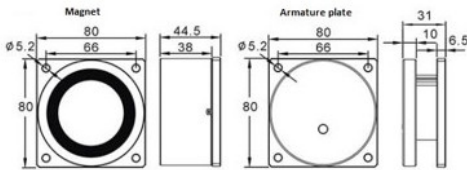
**EXTERNAL ROUND STAINLESS STEEL
MAGLOCK 12/24VDC**

This stainless steel round maglock is suitable for outdoor use (e.g. gates/barriers) due to its weatherproof construction and is ideal for use as a hold-open device. Suitable for 12Vdc or 24Vdc operation.

FEATURES

- Stainless steel casing
- Weatherproof
- Dual voltage
- Anti-residual magnetism feature
- Fail safe (=power to lock)
- Square base plate with 4 x fixing holes (5mm dia.)

TECHNICAL INFORMATION



- Up to 236kg (520lbs) holding force
- Operating voltage: 12/24Vdc
- Current draw: 200mA @ 12Vdc/100mA @ 24Vdc
- Pre-wired with 300mm cable
- Maglock Dimensions: 78mm dia. x 45mm depth.
- Armature plate: 78mm dia. mounted on square base-plate with 4 x fixing holes (5mm dia.)
- Weight: 2kg (approx.)

RELATED PRODUCTS

 <p>DG500</p>	 <p>SPB004S(W)</p>	 <p>SPB050</p>	 <p>WWG7-220G(M)</p>
---	--	---	--